



Since 1977

...Leadership Through Research

## Flameproof Multiparameter display LED



The Flameproof CR131 is specifically designed for the monitoring of Clean Rooms and packaged in a compact shallow enclosure to allow installation in prefab Clean Room Panels of thickness 50mm or more.

**Designed by Global**

**Certified Flameproof Enclosure to fit in Standard 50mm Panel**

**Certificate : ERTL(E)/TES/G106/0024/12-17**

**Option for MODBUS or Ethernet available**

**Also available as a Display unit with RS485 input**

### FEATURES

- Confirms to 21 CFR11 requirements.
- Microprocessor based design with advanced fault tolerant design
- LCD or LED Display of any parameter
- Channel ranges and units can be preconfigured (Factory Configured)
- User programmable for Multiple channel measurements
- Software calibration for all 3 channels with password protection
- Programmable Alarm Limits with Visual Annunciation

### OPTIONS:

- Alarm Relay
- Real Time Clock battery powered clock
- Calibration record with Time and Date Stamp for Validation.
- Logging of 1000 records at a preselected intervals.
- Digital Data transmission for zero error data recording
- Digital communication: MODBUS Protocol/Ethernet on RS485 for Controller / SCADA system

**GLOBAL ELECTRONICS** AN ISO 9001:2015 COMPANY

3-5-331, NARAYANGUDA, HYDERABAD-500029. INDIA

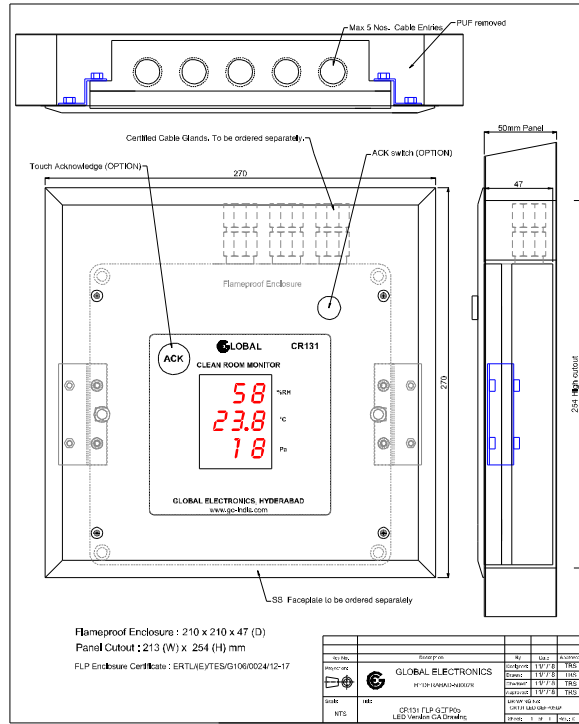
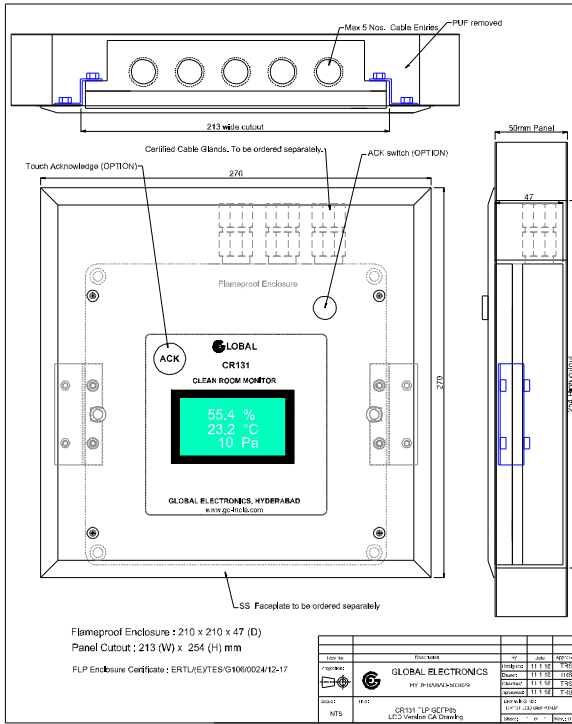
PH: +91 402322 1391, 23226687 FAX: +91 402322 2484 email: Info@ge-india.com URL: <http://www.ge-india.com>



Since 1977

...Leadership Through Research

# GA Drawing



**GLOBAL ELECTRONICS** AN ISO 9001:2015 COMPANY

3-5-331, NARAYANGUDA, HYDERABAD-500029. INDIA

PH: +91 402322 1391, 23226687 FAX: +91 402322 2484 email: Info@ge-india.com URL: http://www.ge-india.com